



DRIVEN BY POSSIBILITY™

SUPER HC™ MN AND TRI-POWER™ BELTS

THE PERFECT V-BELTS FOR YOUR IMPERFECT CONDITIONS

The combination of a wide range of jobs, ever-evolving technology, and numerous emerging applications can make choosing the right industrial belt drive seem complicated. Luckily, no matter what is ahead, Gates is there with quality V-belt solutions like Super HC Moulded Notch (MN) and Tri-Power.

These two popular families of cost-effective, high-load carrying, and flexible V-belts are made of high-performance Ethylene Elastomer (EE) materials to excel from beverage bottling plants to mixing and grinding facilities.

SUPER HC MN:

**NARROW
CROSS-
SECTION**



TRI-POWER:

**CLASSICAL
CROSS-
SECTION**



FEATURES AND BENEFITS

- Wider temperature range than next gen V-belts due to EE materials: -51 °C to +121 °C (-60 °F to +250 °F)
- High-performance, synthetic rubber compounds resist wear increasing belt life
- Belt edge machined for even sheave groove contact, resulting in smoother running, less slip and wear
- Good resistance to occasional exposure to oil and chemicals
- Meets ARPM IP-3-3 and ISO 1813 static-conductivity standards
- REACH compliant
- Suitable for RoHS required applications

15%*

INCREASED CAPACITY

25%*

**DECREASE IN RECOMMENDED
MINIMUM PULLEY DIAMETER
ACROSS PRODUCT FAMILIES**

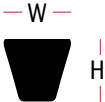
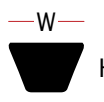
**EXCELLENT
PERFORMANCE-TO-COST RATIO**

*On average vs wrapped/banded belts. Figures vary based on size.

PRODUCT ATTRIBUTES

| SUPER HC MN: MORE POWER IN A SMALLER SPACE | TRI-POWER: TRIED AND TRUE REPLACEMENT OPTION |
|---|--|
| Raw edge, moulded notch | Raw edge, moulded notch |
| NARROW cross-section | CLASSICAL cross-section |
| Reduces space by allowing for more compact drive designs | The go-to belt for classical section sheaves |
| RECOMMENDED FOR: Industrial heavy-duty, narrow section V-belt drives where space, weight, and horsepower capacity are critical. Ideal when designing new drives or replacing sheaves on existing drives. | RECOMMENDED FOR: Industrial applications where small sheave diameters are required. Ideal for applications where sheave replacement is not a possibility or like-for like replacement is preferred. |

AVAILABLE CROSS SECTIONS

| SECTION | WIDTH (W) mm | HEIGHT (H) mm | LENGTH RANGE (datum length - mm) | | SECTION | WIDTH (W) mm | HEIGHT (H) mm | LENGTH RANGE (datum length - mm) | |
|---------|-----------------|------------------|-------------------------------------|---|---------|-----------------|------------------|-------------------------------------|---|
| XPZ/3VX | 10 | 8 | 575-3550 |  | AX | 13 | 8 | 580-4445 |  |
| XPA | 13 | 10 | 690-4000 | | BX | 17 | 11 | 900-5070 | |
| XPB/5VX | 16 | 13 | 1000-5070 | | CX* | 22 | 14 | 1300-5300 | |

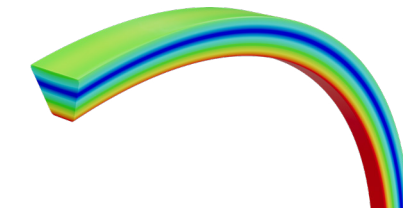
*CX section is manufactured and sold out of the United States.

GATES BANDLESS ADVANTAGE

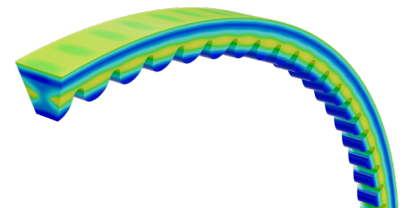
BENDING STRESS COMPARISON

When space is at a premium, drives are often designed with small pulleys. Notched belts excel by reducing the bending stress and heat generation while extending belt life.

Not all notches are created equal, it requires a balance between flexibility and stress distribution. Meeting one of these is easy, meeting both presents quite a challenge.



Using Finite Element Analysis (FEA), the increased bending stresses are clearly visible on a belt without notches.



Molding notches into the belt helps reduce and spread out these stresses.



SUPER HC MN AND TRI-POWER CAN ENHANCE THE PERFORMANCE OF YOUR OPERATION IN **NUMEROUS MARKETS:**



AGRICULTURE



DIVERSIFIED INDUSTRIAL



FOOD AND BEVERAGE



MATERIAL HANDLING



PULP AND PAPER



WATER TREATMENT



NEED HELP DECIDING WHICH BELT IS BEST FOR YOUR APPLICATION? USE **DESIGN POWER**

GATES AUSTRALIA PTY LTD
200 National Drive, Dandenong South VIC 3175
PH: +61 3 9797 9666 FAX: +61 3 9797 9600

GATESAUSTRALIA.COM.AU
FOLLOW US: [GATESAUSTRALIA](#)



FEB 2024